



**Chicago  
Pneumatic**



**Screw Compressors  
below 30kW**

**People. Passion. Performance.**

# People. Passion. Performance.



For Chicago Pneumatic, it isn't just about products. We value our end-users' and distributors' **performance**, and do our ultimate best to make it **easy to work** with us while providing **reliable products with a passion**.

- **Broad product portfolio** of robust compressors & tools
- **Decades of experience & innovation**
- **100% committed** distributor partnership

This is how we keep you productive at all times, meeting the needs of professionals in vehicle service, general industry and construction around the globe.

**People. Passion. Performance.**

## Define your needs, our broad

Going for our extensive offer of oil-injected screw compressors below 30kW, you choose for **reliable performance**, **trustworthy technology** and **increased efficiency**. These ranges are also suitable for more demanding applications and can be deployed in harsh working conditions.



|             |                     |
|-------------|---------------------|
| Noise level | 72-80 dB(A)         |
| Vessel size | 200, 270 or 500 L   |
| FAD         | 220 - 1631 l/min    |
| Power       | 3-20 hp / 2,2-15 kW |
| Pressure    | 8 - 13bar           |
| Weight      | 115 - 354 kg        |

### User benefits

- Simple installation & easy maintenance
- Instinctive and easy to use
- Stable operations (constant pressure)
- Trustworthy technology and new inhouse designed air ends
- Up to 30% more energy efficient than an equivalent power sized Piston compressor



|             |                     |
|-------------|---------------------|
| Noise level | Silent: 61-69 dB(A) |
| Vessel size | 0, 200, 270, 500 L  |
| FAD         | 240 - 1750 l/min    |
| Power       | 3-20 hp / 2,2-15 kW |
| Pressure    | 8 - 13 bar          |
| Weight      | 99 - 348 kg         |

### User benefits

- Easy and user-friendly operation
- Durable performance and designed to operate in hard working conditions
- Low maintenance costs, no wearing parts
- Complete and compact solution
- Quiet operation allowing installation close to the workplace



# offer does the rest

On top of that, these units are **compact, easy to service** and **quiet**, and thus suitable to install in or close to the workshop (f.e. service garage or small assembly line).

## CPA – CPB-CPBg



|             |                       |
|-------------|-----------------------|
| Noise level | Silent: 66-77 dB(A)   |
| Vessel size | 0, 270 or 500 L*      |
| FAD         | 520-6100 l/min        |
| Power       | 7,5-50hp<br>5,5-37 kW |
| Pressure    | 7,5-13 bar            |
| Weight      | 251-905 kg            |

## CPVS - CPVSd



|             |                      |
|-------------|----------------------|
| Noise level | Silent: 69-77 dB(A)  |
| Vessel size | 0, 270 or 500 L*     |
| FAD         | 300-6000 l/min       |
| Power       | 10-50hp<br>7,5-37 kW |
| Pressure    | 5,5 - 12,5 bar       |
| Weight      | 280-925 kg           |

\* Tank-mounted versions available up to 30HP

### User benefits

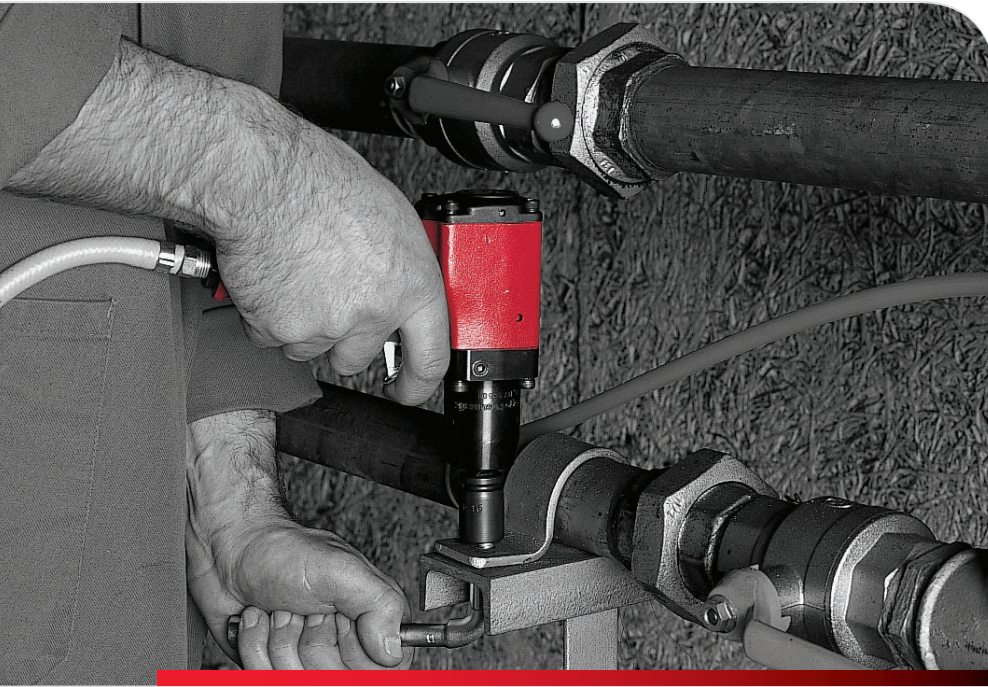
- In-house designed air end suitable for continuous duty and very hard working conditions.
- Long lasting belts and reliable belt tensioning system for excellent performance (CPA-CPB)
- High efficient gear transmission for low cost maintenance and reliable operation (CPBg)
- Good positioning of service items for easy servicing
- Save space and installation costs with tank-mounted installations with dryer
- Increased operating comfort through reduced noise levels

### User benefits

- Inverter technology perfectly matching the air flow with the air demand saving energy costs up to 30%
- Highly efficient element ensures low energy consumption and long term performance
- Highly efficient belt transmission reducing energy consumption
- Direct driven transmission for further energy saving (CPVSd)
- Protects your air network against rust and corrosion thanks to integrated solutions (dryer, air filter,...)
- User-friendly controller for full control



# CPN Series 3 - 20hp / 2,2 - 15kW



**CPN 5,5 200L + Dryer**

## The performance comes with the technology

The CPN screw compressors are up to 30% more energy efficient than an equivalent power sized piston compressor. The CPN is also designed to work continuously if needed, this allows you to get 100% performance, 24 hours a day, from your equipment without fearing a single fail.



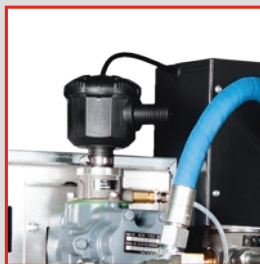
### Simple installation

The compressor, equipped with simple automatic controls, is ready for immediate installation and fitted with an air receiver.



### Easy maintenance

Almost no panels to be removed in case of maintenance and strategic placement of components to facilitate maintenance.



### Reduced power consumption

Due to rotary technology, the CPN consumes up to 30% less power compared to a traditional piston compressor.



### Constant pressure

The combined and continuous action of the spinning element generates air flow delivery without pulsations, granting you the stability you need.



### New generation air ends

New generation air ends guarantee superior efficiency, durability and reliability.



### Time to convert to screw technology!

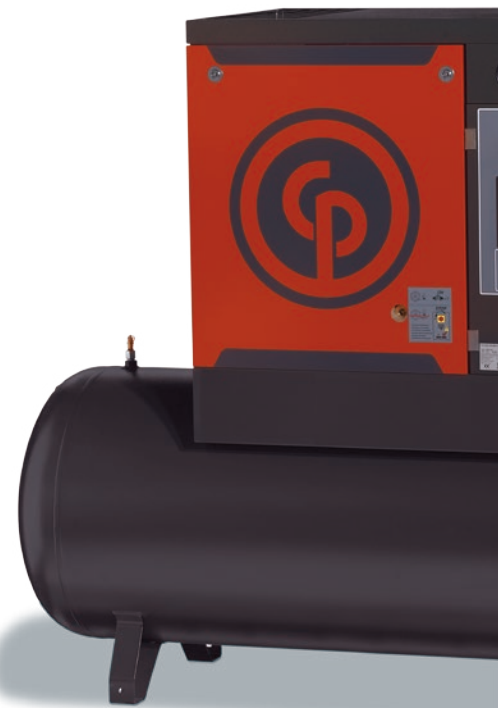
- Up to 30% more energy efficient than an equivalent power sized piston compressor
- Designed to work continuously
- 24/7 performance without any risk of failure
- Pressure stability and no pulsation compared to piston compressors.

| Technical Table             | 🔌 [l/min]     |                |                | 🔊   |      | 🔊  | ⏪                 |
|-----------------------------|---------------|----------------|----------------|-----|------|----|-------------------|
|                             | 8 bar version | 10 bar version | 13 bar version | HP  | kW   |    |                   |
| 200L Tank Mounted (+ Dryer) |               |                |                |     |      |    |                   |
| CPN 3                       | 297           | 220            | na             | 3   | 2,2  | 72 | 1440 x 680 x 1250 |
| CPN 4                       | 350           | 280            | na             | 4   | 3    | 73 | 1440 x 680 x 1250 |
| CPN 5,5                     | 495           | 415            | na             | 5,5 | 4    | 74 | 1440 x 680 x 1250 |
| CPN 7,5                     | 641           | 557            | na             | 7,5 | 5,5  | 76 | 1440 x 680 x 1250 |
| CPN 10                      | 948           | 802            | na             | 10  | 7,5  | 75 | 1440 x 680 x 1250 |
| 270L Tank Mounted (+ Dryer) |               |                |                |     |      |    |                   |
| CPN 3                       | 297           | 220            | na             | 3   | 2,2  | 72 | 1550 x 680 x 1280 |
| CPN 4                       | 350           | 280            | na             | 4   | 3    | 73 | 1550 x 680 x 1280 |
| CPN 5,5                     | 495           | 415            | na             | 5,5 | 4    | 74 | 1550 x 680 x 1280 |
| CPN 7,5                     | 641           | 557            | na             | 7,5 | 5,5  | 76 | 1550 x 680 x 1280 |
| CPN 10                      | 948           | 802            | na             | 10  | 7,5  | 75 | 1550 x 680 x 1280 |
| CPN 15                      | 1408          | 1265           | na             | 15  | 11   | 76 | 1550 x 718 x 1322 |
| CPN 20                      | 1631          | 1473           | na             | 20  | 15   | 78 | 1550 x 718 x 1322 |
| 500L Tank Mounted (+ Dryer) |               |                |                |     |      |    |                   |
| CPN 15                      | 1408          | 1265           | 1034           | 15  | 11,0 | 76 | 1935 x 718 x 1453 |
| CPN 20                      | 1631          | 1473           | 1224           | 20  | 15   | 78 | 1935 x 718 x 1453 |

For weights and part numbers, please contact your local customer center  
 All units are also available in 60Hz, please contact your local sales representative for more information.



# CPM Series 3 - 20HP / 2,2 - 15kW



**CPM 15 270L D**

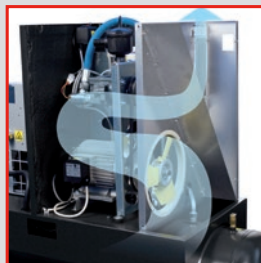
## Quiet by design, complete and compact

Engineered for high performance, efficiency and reliability, the CPM air compressor series can meet the compressed air demands of a tire shop, maintenance shop, vehicle body shop, paint shop or automotive dealership. Quiet by design, the CPM can be installed almost anywhere, without disturbing your working environment. Base mounted or receiver mounted, with or without dryer, the CPM is the leading rotary screw compressor for service or light industrial applications.



Easy operation

Compressed air plain and simple. Just connect the cables, pipes and press start.



Efficient cooling

Lower internal temperatures make your compressor more reliable and extend lifetime.



Built to last

Designed for continuous duty and very hard working conditions.



Fast & cost effective maintenance

No wearing parts: increases reliability and reduces maintenance costs.



User friendly control

ES99 controller makes it simple with easy warning and maintenance messages. (only for 7,5 - 20 HP models)



### Innovative design concept

- Compact and all in one system with a limited footprint
- Save space and installation costs with tank-mounted installations with dryer
- A complete installation reducing the risk of air leakages

| Technical Table             | ⚡ [l/min]     |                |                | 📏   |     | 🔊 dB(A) | 📏 L x W x H (mm)  |
|-----------------------------|---------------|----------------|----------------|-----|-----|---------|-------------------|
|                             | 8 bar version | 10 bar version | 13 bar version | HP  | kW  |         |                   |
| Base mounted                |               |                |                |     |     |         |                   |
| CPM 3                       | 297           | 240            | na             | 3   | 2,2 | 61      | 620 x 612 x 995   |
| CPM 4                       | 443           | 320            | na             | 4   | 3   | 61      | 620 x 612 x 995   |
| CPM 5,5                     | 560           | 470            | na             | 5,5 | 4   | 62      | 620 x 612 x 995   |
| CPM 7,5                     | 697           | 600            | na             | 7,5 | 5,5 | 64      | 620 x 612 x 995   |
| CPM 10 M                    | 1008          | 920            | na             | 10  | 7,5 | 64      | 650 x 642 x 995   |
| CPM 10                      | 1008          | 920            | 557            | 10  | 7,5 | 66      | 810 x 650 x 995   |
| CPM 15                      | 1428          | 1310           | 887            | 15  | 11  | 68      | 810 x 650 x 995   |
| CPM 20                      | 1750          | 1650           | 1190           | 20  | 15  | 69      | 810 x 650 x 995   |
| 200L Tank Mounted (+ Dryer) |               |                |                |     |     |         |                   |
| CPM 3                       | 297           | 240            | na             | 3   | 2,2 | 61      | 1429 x 612 x 1300 |
| CPM 4                       | 443           | 320            | na             | 4   | 3   | 61      | 1429 x 612 x 1300 |
| CPM 5,5                     | 560           | 470            | na             | 5,5 | 4   | 62      | 1429 x 612 x 1300 |
| CPM 7,5                     | 697           | 600            | na             | 7,5 | 5,5 | 64      | 1429 x 612 x 1300 |
| CPM 10 M                    | 1008          | 920            | na             | 10  | 7,5 | 66      | 1429 x 642 x 1300 |
| 500L Tank Mounted (+ Dryer) |               |                |                |     |     |         |                   |
| CPM 10                      | 1008          | 920            | 557            | 10  | 7,5 | 66      | 1935 x 650 x 1483 |
| CPM 15                      | 1428          | 1310           | 887            | 15  | 11  | 68      | 1935 x 650 x 1483 |
| CPM 20                      | 1750          | 1650           | 1190           | 20  | 15  | 69      | 1935 x 650 x 1483 |

For weights and part numbers, please contact your local customer center

All units are available also installed on 270 lt air vessel

All units are also available in 60Hz, please contact your local sales representative for more information.

# CPA / CPB Series 7,5 - 40 HP / 5,5 - 30 kW

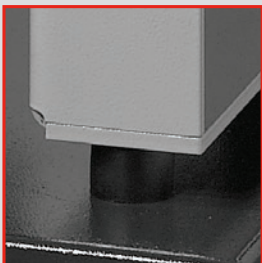


## The ultimate all-in-one solution

Chicago Pneumatic introduced the CPA-CPB Series more than a decade ago. And in this period of time a strong reputation of quality and top performance was built. But, apart from this remarkable past, the design and philosophy have evolved to match new customer needs: a beautiful all-in-one, powerful and silent screw compressor. That's what the CPA-CPB Series is!

A seamless product in terms of user-friendliness, reliability and life duration, which makes this series, "the screw compressor" for tough and hard working conditions.

CPA 20 - 500L



Low noise levels

Insulation foam, deflectors and anti-vibration pads assure low noise levels.



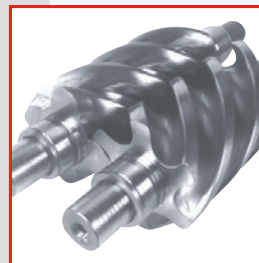
Easy and fast maintenance

Enabled by good positioning of service items: belts, oil and filters.



ES3000

A unique control unit, specially programmed for energy saving.



Built to last

Designed for continuous duty and very hard working conditions.



Small footprint

Compresses, stores and processes air using just 1,5 m<sup>2</sup>.





**Innovative design concept**

The CPA-CPB Series can be configured as an ultimate all-in-one solution that includes:

- Air receiver 270 or 500L (available for units up to 30HP)
- Refrigerant dryer
- Automatic drain
- Line filter

Forget about complex and costly installations. Simply connect the power, connect the piping and press START!

| Technical Table   | ⚡ [l/min]     |                |                | 🔧   |      | 🔊  | ⏪                                     |
|---|---------------|----------------|----------------|-----|------|----|---------------------------------------|
|   | 8 bar version | 10 bar version | 13 bar version | HP  | kW   |    |                                       |
| CPA Base mounted (+ Dryer)                                  |               |                |                |     |      |    |                                       |
| CPA 7*  | 820           | 670            | 520            | 7,5 | 5,5  | 66 | 1095 x 642 x 1070 (1095 x 642 x 1070) |
| CPA 10*   | 1153          | 1000           | 810            | 10  | 7,5  | 66 | 1095 x 642 x 1070 (1095 x 642 x 1070) |
| CPA 15*   | 1665          | 1435           | 1210           | 15  | 11   | 69 | 1095 x 642 x 1070 (1095 x 642 x 1070) |
| CPA 20*   | 1985          | 1771           | 1480           | 20  | 15   | 69 | 1095 x 642 x 1070 (1095 x 642 x 1070) |
| * Tankmounted models are available on 270 and 500 L vessels |               |                |                |     |      |    |                                       |
| CPB Base mounted (+ Dryer)                                  |               |                |                |     |      |    |                                       |
| CPB 15**  | 1726          | 1492           | 1121           | 15  | 11   | 70 | 1095 x 642 x 1070 (1095 x 642 x 1070) |
| CPB 20**  | 2218          | 2020           | 1538           | 20  | 15   | 70 | 1095 x 642 x 1070 (1095 x 642 x 1070) |
| CPB 25**  | 2771          | 2501           | 1959           | 25  | 18,5 | 72 | 1204 x 805 x 1220 (1659 x 805 x 1220) |
| CPB 30**  | 3511          | 3011           | 2612           | 30  | 22   | 74 | 1205 x 805 x 1220 (1659 x 805 x 1220) |
| CPB 40  | 3893          | 3502           | 2942           | 40  | 30   | 77 | 1206 x 805 x 1220 (1659 x 805 x 1220) |
| ** Tankmounted models are available on a 500 L vessel       |               |                |                |     |      |    |                                       |

For weights and part numbers please contact your local customer center  
 All units are also available in 60Hz, please contact your local sales representative for more information.

# CPBg Series 35-50 Hp /26-37 kW gear driven



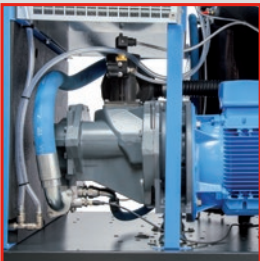
## Strong, reliable, efficient.

With this range, Chicago Pneumatic sets a new standard in high efficiency, low noise level and outstanding reliability. These units come with a new element, a high performance gear box and premium efficiency motors.

Quiet and available with a dryer, water separator and filters, this machine can easily be installed in a compressor room or in the work place close to the air usage point.

The wide range of options allows you to easily customize your CPBg while its unique design satisfies your needs in terms of user-friendliness, reliability and lifetime duration. All in all, the ideal screw compressor for high energy efficiency and hard working conditions.

### CPBg 40



Low noise levels

The new element and gearbox combined with the deep sound insulation result in a very low sound level



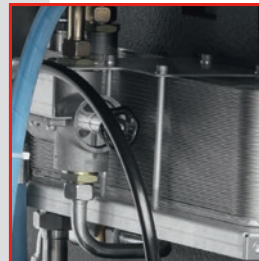
Easy and fast maintenance

Easy maintenance and very low pressure drop thanks to the new oil separation



ES4000

A unique control unit, specially programmed for energy saving. ES4000 advanced as an option.



Energy recovery

Recover up to 75% of the energy spent to produce compressed air improving your production efficiency



Air quality package

CPBg is available with dryer, water separator drain and post filter for improved quality air.





### Gear drive for high efficiency

The CPBg series offers you outstanding efficiency and great reliability thanks to the new element combined with robust gearbox technology and premium efficiency motors (IE3).

Add a revised lay-out, a big oil separator and coolers to that and you have a compressor that will grant you total peace of mind.

| Technical Table  | 🔌 [l/min]       |                 |                |                | 🏠  |    | 🔊     | 📏 L x W x H (mm)                      |
|------------------|-----------------|-----------------|----------------|----------------|----|----|-------|---------------------------------------|
|                  | 7,5 bar version | 8,5 bar version | 10 bar version | 13 bar version | HP | kW | dB(A) |                                       |
| CPBg gear driven |                 |                 |                |                |    |    |       | (+ Dryer)                             |
| CPBg 35          | 4440            | 4140            | 3960           | 3480           | 35 | 26 | 69    | 1350 x 780 x 1580 (1830 x 780 x 1580) |
| CPBg 40          | 5400            | 4920            | 4620           | 3960           | 40 | 30 | 70    | 1350 x 780 x 1580 (1830 x 780 x 1580) |
| CPBg 50          | 6060            | 5460            | 4920           | 4320           | 50 | 37 | 71    | 1350 x 780 x 1580 (1830 x 780 x 1580) |

For weights and part numbers please contact your local customer center.  
All units are also available in 60Hz, please contact your local sales representative for more information.

# CPVS Series 20 - 40 HP / 15-30 kW belt driven

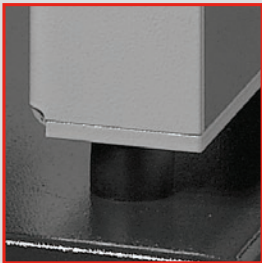


## Compressed air that pays for itself

The Chicago Pneumatic Variable Speed compressor series CPVS allows you to drastically reduce your operating costs when your equipment is not working at full capacity all day long. Basically the inverter reduces the motor speed to match your air consumption and as a result, you save energy and money.

The CPVS is great as a stand-alone machine or networked to a load-unload CP compressor where it can function as a master and regulate the air delivery for the whole site.

**CPVS 25Hp TM**



**Low noise levels**

Insulation foam, deflectors and anti-vibration pads assure low noise levels.



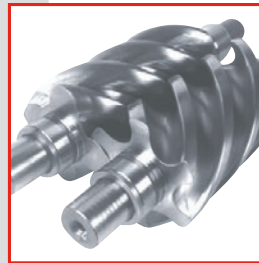
**Easy and fast maintenance**

Enabled by good positioning of service items: belts, oil and filters.



**ES3000**

A unique control unit, specially programmed for energy saving.



**Built to last**

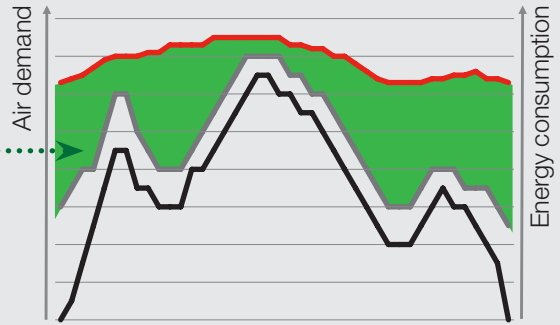
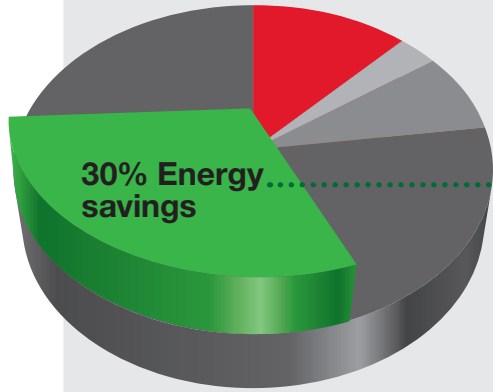
Designed for continuous duty and very hard working conditions.



**Small footprint**

Compresses, stores and processes air using just 1,5 m<sup>2</sup>.





- 12% investment
- 3% installation
- 8% Service
- 77% Energy consumption
- Air demand
- Variable frequency driven costs
- Load Unload costs
- Savings

### Savings through energy efficiency

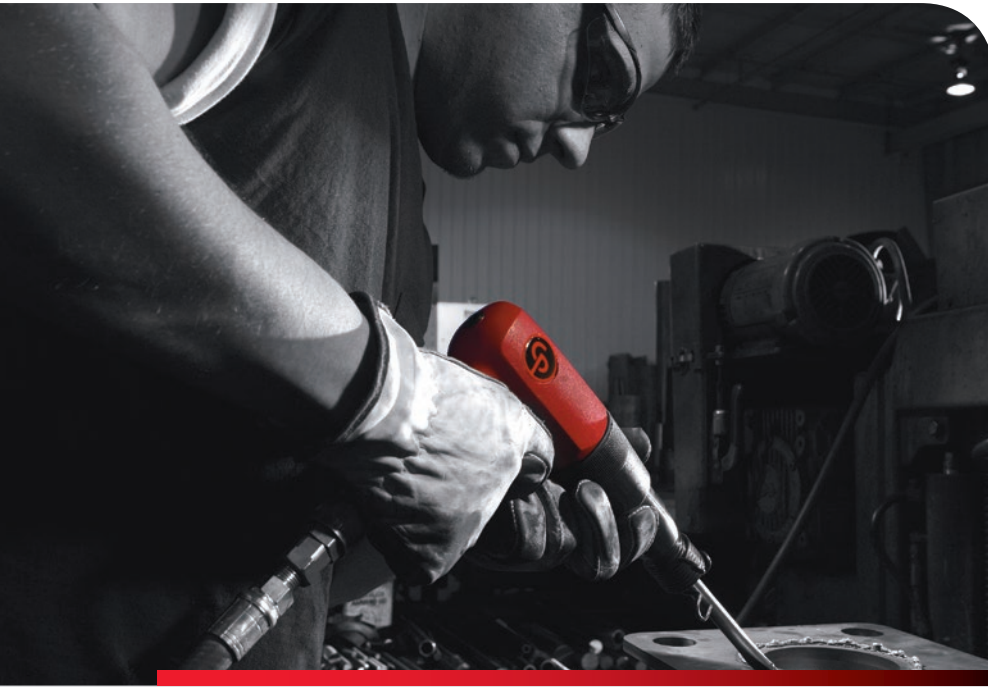
Energy costs represent about 70% of the total operating cost of your compressor over a 5 year period. That's why reducing the operating cost of a compressed air solution should be a major focus. Variable frequency driven compressors can cut the energy bill of your compressor by up to 30%.

| Technical Table | ⚡         |           | 🔧  |      | ⚙️        | 🔊     | ⏪                                     |
|-----------------|-----------|-----------|----|------|-----------|-------|---------------------------------------|
| Type            | l/min min | l/min max | HP | kW   | Bar       | dB(A) | L x W x H (mm)                        |
| CPVS 20-40      |           |           |    |      |           |       | (+ Dryer )                            |
| CPVS 20/8 *     | 660       | 2250      | 20 | 15   | 5,5 - 9,5 | 69    | 1204 x 805 x 1220 (1659 x 805 x 1220) |
| CPVS 20/10 *    | 470       | 2210      | 20 | 15   | 7,5-12,5  | 69    | 1205 x 805 x 1220 (1659 x 805 x 1220) |
| CPVS 25/8 *     | 880       | 3170      | 25 | 18,5 | 5,5 - 9,5 | 72    | 1206 x 805 x 1220 (1659 x 805 x 1220) |
| CPVS 25/10 *    | 670       | 2730      | 25 | 18,5 | 7,5-12,5  | 72    | 1207 x 805 x 1220 (1659 x 805 x 1220) |
| CPVS 30/8 *     | 1020      | 3620      | 30 | 22   | 5,5 - 9,5 | 74    | 1208 x 805 x 1220 (1659 x 805 x 1220) |
| CPVS 30/10 *    | 850       | 3240      | 30 | 22   | 7,5-12,5  | 74    | 1209 x 805 x 1220 (1659 x 805 x 1220) |
| CPVS 40/8       | 1240      | 4170      | 40 | 30   | 5,5 - 9,5 | 77    | 1210 x 805 x 1220 (1659 x 805 x 1220) |
| CPVS 40/10      | 980       | 3640      | 40 | 30   | 7,5-12,5  | 77    | 1211 x 805 x 1220 (1659 x 805 x 1220) |

\* Tankmounted models are available up to 30HP and on a 500 L vessel

For weights and part numbers please contact your local customer center  
All units are also available in 60Hz, please contact your local sales representative for more information.

# CPVsd Series 10-20 Hp /7.5-15 kW and 35-50 Hp/26-37kW direct driven



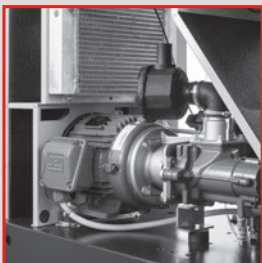
**CPVsd 40Hp D**

## Optimize your energy consumption

Introducing direct driven transmission in its variable speed range of compressors, Chicago Pneumatic sets a new milestone in compressed air. The new design, fully dedicated to variable speed applications, grants a maximum of energy saving, very high flexibility, and very low ownership costs.

Thanks to the air receiver (available up to 20 hp), the integrated dryer and the quality air devices available, you can complete your installation in a very compact and cost competitive way.

A wide range of options make these machines easy to customize and tailored to meet each customer's needs.



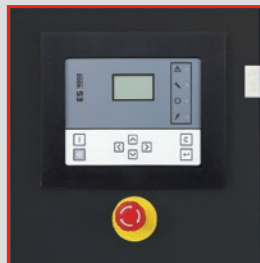
Low noise levels

Both the new elements (direct coupled) combined with the deep sound insulation results in a very low sound level



Easy and fast maintenance

Fast and easy serviceability, all the service components placed close to front panel



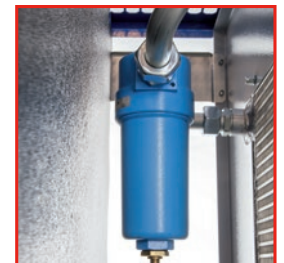
ES4000

A unique control unit, specially programmed for energy saving. ES4000 advanced as option



Energy saving

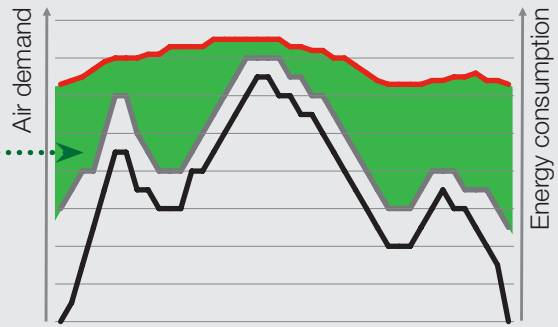
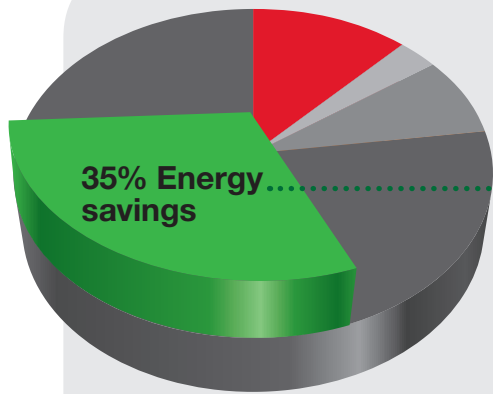
The new generation of elements combined with the new converters and the highly efficient transmissions result in high flexibility and efficiency



Quality air package

CPBg is available with dryer, water separator drain and post filter for improved quality air.





- 12% investment
- 3% installation
- 8% Service
- 77% Energy consumption
- Air demand
- Variable frequency driven costs
- Load Unload costs
- Savings

### Direct drive for outstanding efficiency

The direct driven transmission combined with the high frequency motor result in a very wide turn down and very low specific energy requirement at each speed. The new generation of air ends with very strict tolerances grant outstanding volumetric efficiency resulting in a very low energy consumption.



| Technical Table               | ⚡         |           | 🏭  |     | 🕒        | 🔊     | ⏪                                     |
|-------------------------------|-----------|-----------|----|-----|----------|-------|---------------------------------------|
|                               | min @7bar | max @7bar | HP | kW  | Bar      | dB(A) | L x W x H (mm)                        |
| CPVSD direct driven (+ Dryer) |           |           |    |     |          |       |                                       |
| CPVSD 10*                     | 380       | 1260      | 10 | 7.5 | 5.5-12.5 | 64    | 995 x 655 x 1045 (1305 x 655 x 1045)  |
| CPVSD 15*                     | 400       | 1920      | 15 | 11  | 5.5-12.5 | 64    | 995 x 655 x 1045 (1305 x 655 x 1045)  |
| CPVSD 20*                     | 400       | 2200      | 20 | 15  | 5.5-12.5 | 65    | 995 x 655 x 1045 (1305 x 655 x 1045)  |
| CPVSD 35                      | 780       | 4500      | 35 | 26  | 5.5-12.5 | 69    | 1350 x 780 x 1580 (1830 x 780 x 1580) |
| CPVSD 40                      | 1020      | 5420      | 40 | 30  | 5.5-12.5 | 70    | 1350 x 780 x 1580 (1830 x 780 x 1580) |
| CPVSD 50                      | 1080      | 6060      | 50 | 37  | 5.5-12.5 | 71    | 1350 x 780 x 1580 (1830 x 780 x 1580) |

\*Available also Tank mounted (270 - 500 L)

For weights and part numbers please contact your local customer center.  
All units are also available in 60Hz, please contact your local sales representative for more information.

# Chicago Pneumatic: full offer, global presence



Piston compressors



Screw compressors



Industrial & vehicle service tools



Portable compressors & generators



Construction equipment



## Care. Trust. Efficiency.

### Care.

Care is what service is all about: professional service by knowledgeable people, using high-quality original parts.

### Trust.

Trust is earned by delivering on our promises of reliable, uninterrupted performance and long equipment lifetime.

### Efficiency.

Equipment efficiency is ensured by regular maintenance. Efficiency of the service organization is how Original Parts and Service make the difference.

DISTRIBUTED BY

6999610312

[www.cp.com](http://www.cp.com)